

Stawell Times-News
PHOTOS
Copies of photos can be purchased from our office. Photos not published may also be available.
Call into 58 Main St, Stawell
Phone: 5358 1060

THE STAWELL Times-News
Published Tuesday & Friday Est. 1868 \$1.30 inc GST

LANDMARK Harcourts
Bruce McIlvride
0447 582 100
5358 2100
179 Main Street, Stawell
bruce.mcilvride@landmarkharcourts.com.au
landmarkharcourts.com.au

Telephone (03) 5358 1060 or 5358 2725 Fax (03) 5358 3859

TUESDAY, JULY 19, 2011

32 pages Print Post Approved N.O. P.P. 344460/00001



Shoeboxes to help needy

Page 3

INSIDE

Places and Faces	Page 6
Comics	Page 10
On The Land	Pages 23-24
Classifieds	Pages 25-27



Train exhibition a runaway success

Page 7

New technology in gold discovery

STAWELL - Victorian-focused exploration company Navarre Minerals Limited has successfully used leading edge geophysics to identify potential quartz reef drill targets under cover at its 100%-owned Bendigo North Gold Project.

Navarre elected to trial this technology as a follow-up to recent air-core drilling success at the west Tandarra prospect, 40 kilometres north of the Bendigo Goldfield.

"The quartz reefs identified through recent air-core drilling are the ongoing target of our Bendigo North exploration program, but we wanted a methodology to better target our follow up drilling to reduce time and cost to discovery," Navarre Managing Director, Geoff McDermott, said

"The electrical geophysical surveying method detected the location and depth of a known quartz reef hidden beneath shallow cover of the younger Murray Basin sediments when the survey was run across the discovery drill holes.

"We have since expanded the survey over a 900m by 700m test area immediately to the north of the discovery holes at west Tandarra.

"The geophysics seems to show continuity of a least three subparallel mineralised quartz reefs over the 900m strike test area. We will now test this with drilling."

If the drilling results are successful, the geophysics is likely to be expanded into other areas within the exploration licence (approximately 144 square kilometres.

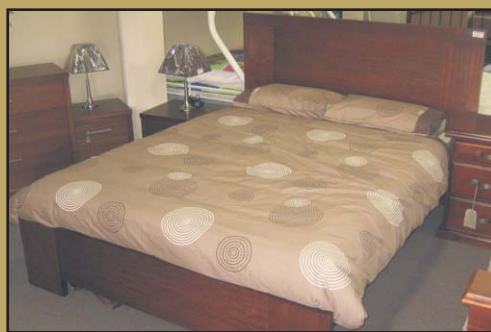
The success of the geophysics program could

Continued page 2.



Jeremy Joiner at Brambuk Aboriginal Cultural Centre in Halls Gap, is pictured giving a boomerang throwing lesson to Bridget Diviny, aged six, from East Malvern. Bridget's family planned to spend three days in Halls Gap but were having such a great time decided to stay for an extra day.

Picture: KERRI KINGSTON.



Bedroom Suites

OVER 30 MODELS & STYLES ON DISPLAY



Come in and check out our great range including:-

- Bedroom Packages
- Ensembles
- Mattresses
- ALL SIZES

Stockists of



Products



*EFTPOS *VISA *MASTERCARD



MANCHESTER PACKAGES AVAILABLE

FREE Delivery to Stawell, Ararat & Surrounding Districts
Removals & Self Storage

157-161 Main St, Stawell
Just up from the ANZ Bank
Ph: 5358 3942



Farmers feel burden

ARARAT - An Ararat Rural City resident has accused Council of renegeing on a motion adopted last year to progressively introduce a municipal charge, which would have had the effect of easing the rate burden on the farming community.

Wickliffe farmer David Hucker was one of only two residents to provide submissions in relation to the draft 2011/2012 budget adopted by Council at its June meeting, which proposed to keep the municipal rate at \$80, and asked to speak to his submission at a special meeting of council last week.

The introduction of a differential rating strategy last May caused widespread outrage and debate in the community.

The strategy proposed a farm rate of 0.6 in 2010-2011 and a municipal charge of \$80; 0.525 in

2011-2012 and a municipal charge of \$120; and in 2012-13 a farm rate of 0.45 and a municipal charge of \$150.

After receiving more than 300 submissions on the Rating Strategy, Council moved to review the strategy and as a result of that review the draft budget adopted this year proposed a farm rate of 0.525, but retaining last year's municipal charge of \$80.

"What we're most concerned about is that the municipal charge is to remain at \$80 this year according to draft budget," Mr Hucker said.

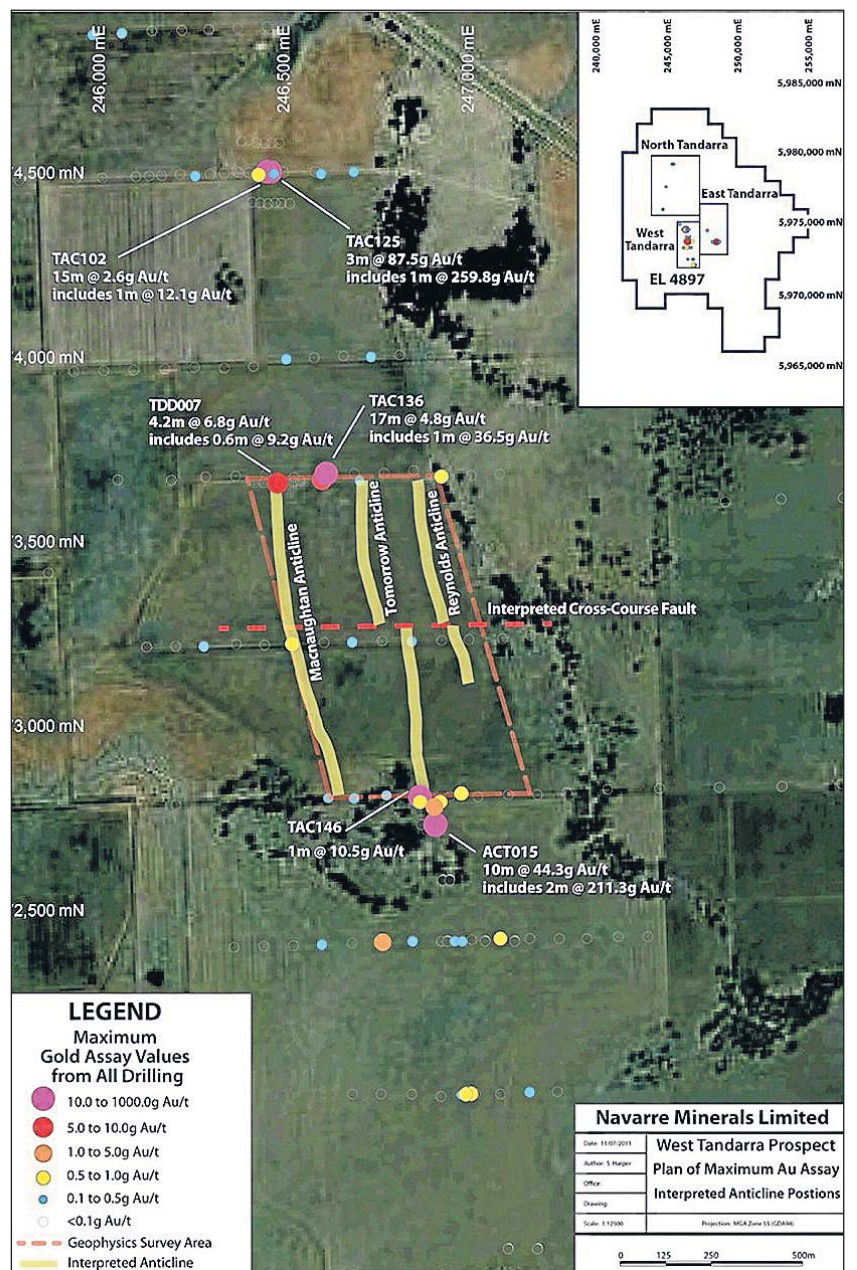
"The reason we're concerned about it is under current rules of local government the only things that can be altered are the differential rating system at a ratio of one to four and the municipal charge up to a maximum of 20 percent of total rates collected.

"So when the motion was taken last year it was taken on the basis that this would see the progressive reduction in rating for the farming community, which at that time was paying eight times the rate of non farming persons. This year, the second year of strategy that was agreed to last May, will still leave the farming community paying five times as much as the non farming members of this community.

"So even though the municipal charge remains at \$80 rather than going to \$120 as agreed to in the strategy last year, it does mean a relative increase in rates for farming community members of \$150, not an insignificant amount in terms of rates, I put to council."

Mr Hucker said the longer term effect of this is if the municipal charge doesn't jump markedly next year it would mean falling behind on the slow progressive reduction of the farm rates towards an equitable rating strategy.

"In the longer term if we're looking to get somewhere near an equitable rating strategy.. we'll eventually have to have a very large increase in the municipal charge. Because we can't go below a 0.375 for the farm differential rate, so even if we get to 0.375 the municipal charge, very roughly, could be levelled at somewhere the likes of \$350. That would still leave the farming community paying a much larger proportion of rates than the non farming community.



Location of geophysical survey test area showing interpreted shallow quartz reefs within anticlinal folds and maximum gold assay values from all drilling.

THE STAWELL Times-News
 Regional Publishers (Western Victoria Pty Ltd)
 A Division of Rural Press Ltd ABN 40 006 247 016
 58 Main Street, Stawell 3380

OFFICE HOURS
 MONDAY TO FRIDAY: 8.00am to 5pm
 Telephone: 5358 1060, 5358 2725
 Facsimile: 5358 3859
 E-mail: stawelltimes@thecourier.com.au

Manager	Ian Peterson	5358 1060
		5358 2725
Editor	Marcus Marrow	5358 1060
		5358 2725
Editorial	Marcus Marrow	5358 1060
	Aiden Lee	5358 1060
Advertising	Angie Fudge	5358 1060
		5358 2725
Administration	Lauren Iseppi	5358 1060
& Classifieds	Kay Cadzow	5358 2725

NOTE: All advertising and editorial content of this issue is the copyright of The Stawell Times-News and cannot be used without the company's permission. The Stawell Times-News is published by Ian Ronald Peterson for Regional Publishers (Western Victoria) Pty. Ltd. (a Division of Rural Press Limited) at the office of The Stawell Times-News, 58 Main Street, Stawell and printed at Rural Press (Vic) Printing, 30-32 Grandlee Drive, Wendouree. Responsibility for election comment is taken by The Stawell Times-News editor, Marcus Marrow. Print Post Approved N.O. P.P. 344460/00001.
 In lodging an advertisement with us you agree that we may publish the advertisement on our web site. We provide this service at no additional cost. The general term and conditions that apply to publication of classified advertisements apply also to publication on our web site.

When the going gets tough the tough KEEP going!

"It is well documented that brands that increase advertising during a recession, when competitors are cutting back, can improve market share, and return on investment at lower cost than during good economic times"

Harvard Business School Professor John A. Quelch
 (from <http://hbswk.hbs.edu/item/5878.html>)

Economic downturns provide opportunities. Many consumers have just as much disposable income as ever*.
 So when your competitors stop advertising it provides your business with the ideal opportunity to increase your market share.

Can your business afford **NOT** to advertise?

THE STAWELL Times-News **The Ararat Advertiser.**
 Source: *Byron Sharp, Ehrenberg - Bass Institute September 2008 www.warc.com

New technology used in gold find

From page 1.
 reduce the time and cost of defining a potential maiden mineral resource through improved drill targeting and rapid definition of multiple quartz reef structures.
 "Unlike the outcropping quartz reefs discovered in the Bendigo and Ballarat goldfields 160 years ago, the gold bearing quartz reefs of west Tandarra were not previously identified and exploited because they were hidden from view under a thin veneer of recent sediments," Mr McDermott said.
 "New and innovative exploration techniques such as geophysics are likely to herald the next generation of Greenfield gold discoveries under cover in Victoria..

Navarre expects to commence a 2,000 metre air-core drilling program in early August to confirm interpretation of the geophysics.
 Following completion of this program, Navarre intends to design a major program of geophysics and drilling scheduled for later in the year. Details will be announced when drilling contracts and permitting aspects have been finalised.
 Navarre is a Victorian based explorer with four main exploration projects in central and western Victoria with the potential for large gold and copper-gold-zinc deposits.

Youngsters up close with ponies

STAWELL - Taylors Gully Children's Centre attendees recently got up close and personal with miniature ponies.
 Early childhood educator, Kayla Spriggs said about 25 children and eight care givers went on an excursion to visit the Redgum miniature ponies, which are located in walking distance of the centre.
 "They got to pat them and feed them carrots. It was really good for the kids, they all enjoyed it," she said.
 Ms Spriggs said she instructed the children on how to approach the animals safely prior to the visit, including holding their hands out for the ponies to smell and keeping quiet.
 She said the children were interested in learning more about animals.
 "We'll probably follow this on with a visit to the Wildlife Park or somewhere like that later on in the year," she said.

See pictures page 6.